



Soto Mission of Hawaii
1708 Nuuanu Avenue
Honolulu, HI 96817



Return Service Requested

Non-Profit Organization
U.S. Postage Paid
Honolulu, Hawaii
Permit No. 1123



SOTO MISSION OF HAWAII

BETSUIN NEWSLETTER

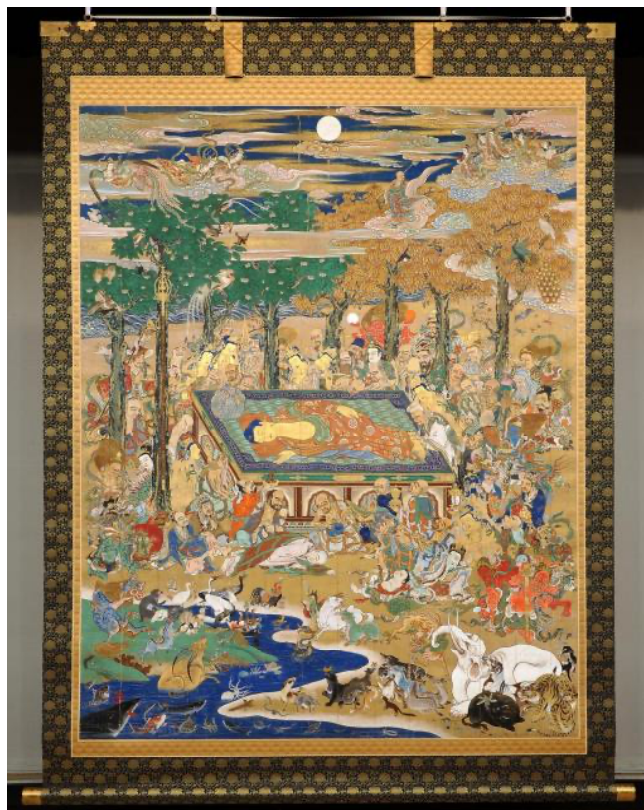
FEBRUARY 2022

Nehan-e Service (Feb 13 @ 9:30am)
General Membership Meeting
An Endeavor To Succeed
Let's Learn About Soto-Shu: Nehan-e (Nirvana Service)
Announcements
 Reminder: Membership Dues and Nokotsudo
 Maintenance Fee
 Office Hour Changes
Donations

2 **Soto Mission of Hawaii**
2 1708 Nuuanu Avenue
2 Honolulu HI 96817
3 Tel: 537-9409 Fax: 537-6320
3 E-Mail: info@sotomission.org
4 HP: www.sotomission.org
4 FB: [@sotomissionofhawaii](https://www.facebook.com/sotomissionofhawaii)
4 Office Hour: 8AM-4PM
4 Except for Federal Holidays
and 5th Sunday
4 Editor: Rev. Hirosato Yoshida.

Nehan-e Service (Feb 13 @ 9:30am)

On Feb. 13 at 9:30 am, we will be observing Nehan-e. Nehan-e Service is a service dedicated to Shakyamuni Buddha in memory of his death. He is said that he took his last breath at a place called Kushinagara, Northern India. This is where he gave his last sermon. He taught his disciples that even he, who has attained enlightenment, will eventually pass on. This is his basic teaching of impermanence of physical entity. Let us gather on this day to share our deepest understanding of Buddhist teachings as we dedicate the service to Shakyamuni Buddha. A large scroll showing the reclining Buddha surrounded by followers and animals in moaning will be displayed inside the temple. The service will be live-streamed on our Homepage at www.sotomission.org/live. After the Nehan-e Service, we will be having our General Membership Meeting. At the meeting, we will be installing the new Board of Directors who will serve the term 2021-2022.



General Membership Meeting

Annual general membership meeting for 2022 will be held on February 13 following Nehan-e Service. Reports from the year 2021 and information about what is planned for 2022 will be shared during the meeting. Members of Soto Mission of Hawaii are encouraged to participate and share your thoughts on the future of the temple.



An Endeavor To Succeed

by Cy Kaneshiro, Soto Academy Graduate (2020)

When Bingham Tract School was closed in 1990, the staff and it's students were relocated to Soto Mission of Hawaii to start Soto Academy. Soto Academy continues, to this day, to follow the philosophy and education that was taught at Bingham Tract.

Soto Academy is a member of HAIS (Hawai'i Association of Independence Schools) which is an organization that depends and mandates that all schools within the organization maintain not only exemplary professional and educational standards, but also collegial and ethical relations with all other member schools. Additionally, Soto Academy offers extra curricular activities after school such as art, Japanese language and Japanese culture, music, computer, and sports. Focusing on the basic foundations which are taught during the extra curricular activities. The philosophy of the school is to teach self-discipline, independence, creative thinking and good work habits. For this reason, the majority of Soto academy graduates have the advantage of being accepted into other private schools on O'ahu.

There are no more than twelve children per classroom which allows individualized support from the teacher in all the core subjects. This allows students to receive consistent feedback or help for any assignments. The feedback given is positive while pointing out their mistakes. Thus, facilitating the student to grasp and to attain from their errors and keep a healthy sense of accomplishment.

Being a graduate of Soto Academy has provided me with a strong foundation in all core subjects and thus being accepted to the Gifted and Talented program at Stevenson Middle School which manifest challenging curriculum standards. In addition to my seven classes, I am enrolled in the DOE E-School's Online Algebra II course.

I've also gained a virtuous experience by volunteering for the temple events and collaborating with Kona Daifukuji's online courses, The study of the Sixteen Precepts and Zen Seeds discourse on the Zoom platform with Nakade Sensei and participants from across the world.

It is with my experience at Soto Academy, as well as the guidance of Bishop Shugen Komagata and the late Aunty Faye Komagata, along with the ministers and members of Soto Mission of Hawaii, I have developed a sense of perseverance and mindfulness, which have allowed me to endeavor to achieve my academic and moral goals.

Let's Learn About Soto-Shu: Nehan-e (Nirvana Service)

The day that Shakyamuni Buddha died near the town of Kushinagara on the banks of the Hiranyavati River.

A big scroll depicting the Buddha entering Nirvana is hung in the temple and a ceremony expressing our gratitude to the Buddha is performed.

It is said that at the time before passing, the Buddha was sleeping on a bed that had been prepared between two sala trees; his head to the north, his face to the west, and his right hand for a pillow. At that time, white flowers bloomed on the sala trees and fell continuously.



Many of his disciples, the king and his family, men and women of all ages, and even birds and animals gathered, sighing with sadness. The Buddha gave his last sermon, expounding the fundamental truth – even though the physical body dies, the Dharma is eternal; in order to see the Buddha, it is necessary to see the Dharma. In this way, he taught his disciples the precepts and the way they should maintain the practice of Buddha's Way. This sermon is called the Yuikyogyo, the Last Teaching of Shakyamuni Buddha.

Nehan [Mochi] Dango

In connection with the Nirvana Ceremony, there are some districts in Japan (not practiced in Hawaii) where, from long ago, [mochi] dango have been made either at the temple or in individual homes. These [mochi] dango, also known as "flower [mochi] dango," are first offered to Shakyamuni Buddha and then distributed to people who attend the ceremony.

It is generally said that people who eat these [mochi] dango will not suffer from sickness or disaster and for this reason many people come to the temple on the day of this ceremony.

(Article from Soto Shu Headquarter)



Announcements

Reminder: Membership Dues and Nokotsudo Maintenance Fee

We appreciate your generous support each year through the timely payment of our Membership Dues. This helps us maintain and operate the temple each year. If you have not done so, the forms have been sent to you in December. Or you can also fill out the form on our homepage at <https://www.sotomission.org/posts/2022membership>.

Annual Membership Fee is \$150.

Nokotsudo (Columbarium) Maintenance Fee is \$24 per Niche.

Please use the membership form and the enclosed envelope to send in your payment to us.

We thank you for your support and contributions.

Upcoming Events

February 13, 9:30 AM Nehan-e Service

February 13, Followed immediately after Nehan-e Service General Membership Meeting

Office Hour Changes

Feb. 21 Closes at noon in observance of President's Day

Donations

Thank you to the following individuals and organizations for their generous donations for the month of December.

Memorial Service / Funeral / General Donations

Aikido Ohana, Charities Aid Foundation of America, Tawata Family, Amy Dang, Bernice Koike, Bryan Sasaki, Carol Haga, Carolyn Eaton, Dara Luangphihith, Dean Tanabe, Dixon Suzuki, Ellen Nishimura, Eric Yamanaka, Frank Childs, Fujiko Akiyoshi, Gertrude Kihara, Grace Shinohara, Hiromi Shimada, Jamie Peterson, Joanna Ito, Katherine Hamada-Kwock, Linda Unten, Lori Higa, Marian Merce, Mary Ann Oishi, Masae Hayashi, Marilyn Oda, Michael Dang, Michiko Sasaki, Miles Kasahara, Mitsue Nakagawa, Mitsuo Fukushima, Miyeko Hashimoto, Neal Matsueda, Patrice Katayama, Paul Matsuda, Rue Inuma, Ryuko Kokuzo, Sally Nozaki, Thomas Itagaki